



THE POWER TO MOVE



EASY TECH  **app**

5114
USER MANUAL



THE POWER TO MOVE

NEW SERIES 50

Series 50 is a complete series of PROFELMNET control boards, with integrated Bluetooth technology. Compatible with Profelmnet Easy Tech application that is available in IOS and Android. The installer is able to access and adjust all the functions of the control board through the smartphone, tablet or laptop.

The models of series 50 are :

- 5033 control board for sliding and swing gate, roller shutter, barrier 230VAC
- 5050 control board for sliding and swing gate, barrier, pergolas 24VDC
- 5114 control board for double motors 230VAC
- 5150 control board for double motors 24VDC

CE Declaration of Conformity

The manufacturer **L. PSARROS & SIA OE** declares that the products **5050, 5033, 5114, 5150** are according to European Directives requirements of **RADIO EQUIPMENT DIRECTIVE (RED) 2014/53/EU** and **ELECTROMAGNETIC COMPATIBILITY EMC 2004/108/EC**

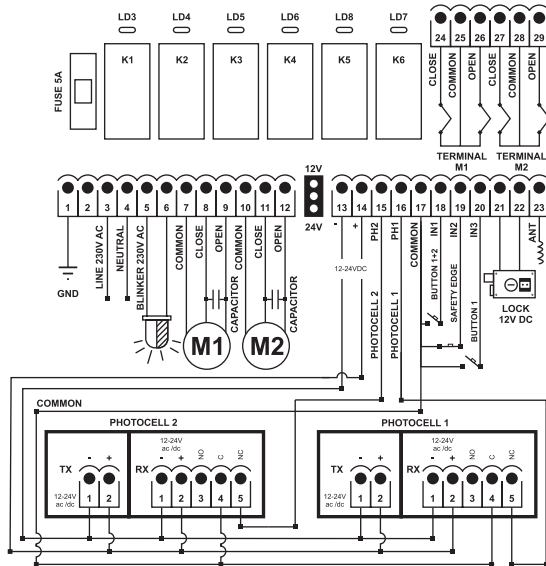
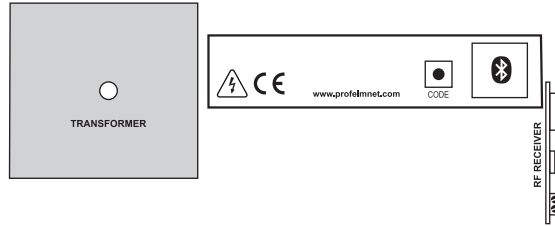


Labros Psarros
Electronics Engineer
Technical Director

Warning for the installer

1. **ATTENTION!** To ensure the safety of people, it is important that you read all the following instructions. Incorrect installation or incorrect use of the product could cause serious harm to people
2. Carefully read the instructions before beginning to install the product
3. This product was designed and built strictly for the use indicated in this documentation. Any other use, not expressly indicated here, could compromise the good condition/operation of the product and/or be a source of danger
4. Store these instructions for future reference
5. Before attempting any job on the system, cut out electrical power
6. Make sure that a differential switch with threshold of 0.03 A is fitted upstream of the system
7. Do not in any way modify the components of the automated system
8. Do not allow children or adults to stay near the product while it is operating
9. Keep remote controls or other pulse generators away from children, to prevent the automated system from being activated involuntarily
10. The user must not attempt any kind of repair or direct action whatever and contact qualified personnel only
11. Profelmnet as a manufacturer reserves the right to make changes to the product without notice
12. Anything not expressly specified in these instructions is not permitted

5114 Control board for double motors 230VAC



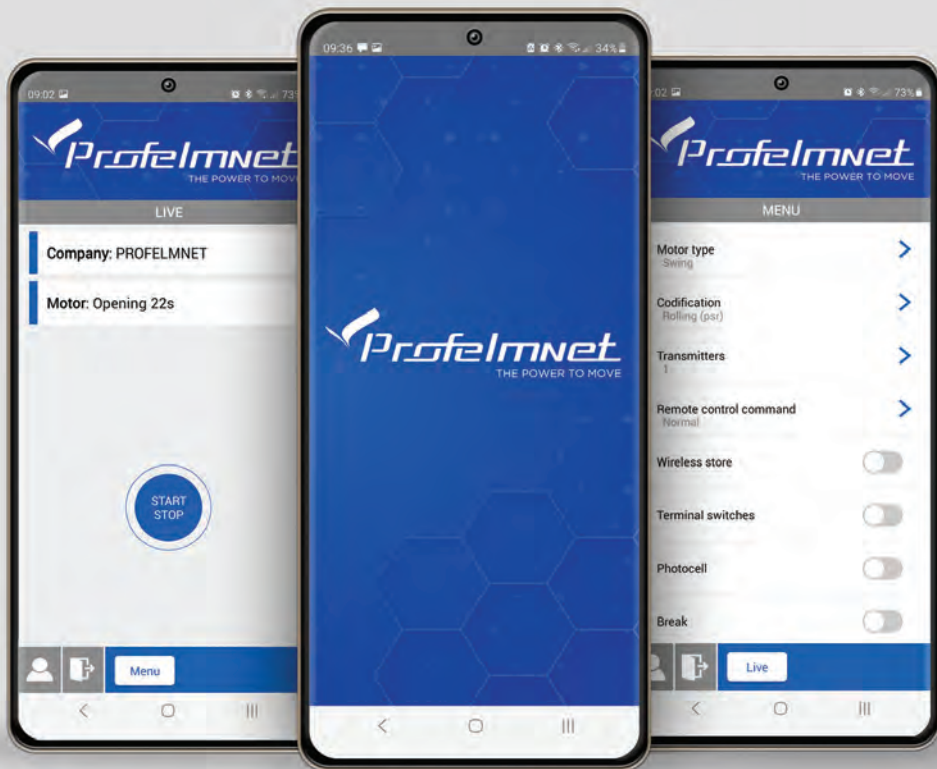
TECHNICAL CHARACTERISTICS

Power supply	230VAC /50 Hz
Max. Motor power	2400W in total
Box dimensions	25cm X19.5cm X10cm
Control board dimensions	13cm X13.5cm X 4.5cm
Fuse 230VAC	5A
Fuse 12-24VDC	500mA
Blinker light power supply	230VAC
Photocell power supply	12 or 24VDC (jumper)
Lock power supply	12VDC
Remotes memory	Removable memory up to 300 remotes
Temperature	-20oC + 60oC

ELECTRICAL CONNECTIONS

1	Ground	16+17	Photocell 1
2	Not used	17	Common accessories
3	Line	18+17	Button 1+2 - N.O
4	Neutral	19+17	Safety edge - N.C
5-6	Blinker light	20+17	Button motor 1 - N.O
7	Common motor 1	21+22	Lock 12VDC 5Watt
8	Close motor 1	23	Antenna
9	Open motor 1	24+25	Close terminal switch motor 1-N.C
10	Common motor 2	25	Common terminal switch motor 1
11	Close motor 2	26+25	Open terminal switch motor 1-N.C
12	Open motor 2	27+28	Close terminal switch motor 2-N.C
13-14	Power supply 12-24VDC	28	Common terminal switch motor 2
15+17	Photocell 2	29+28	Open terminal switch motor 2-N.C

ACTIVATE INTERNET AND BLUETOOTH  OF YOUR DEVICE
DOWNLOAD THE PROFELMNET EASY TECH APPLICATION

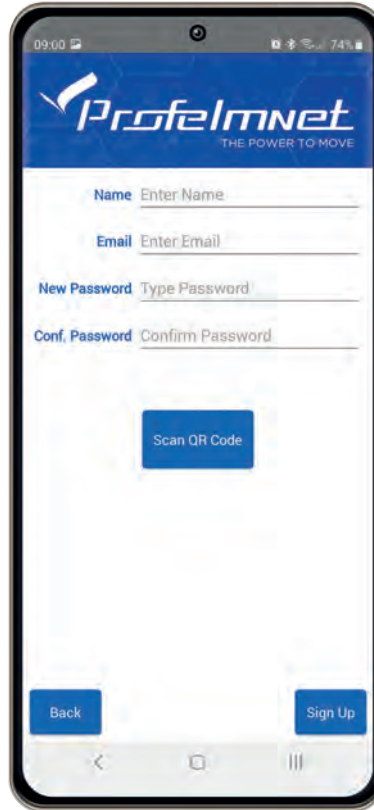
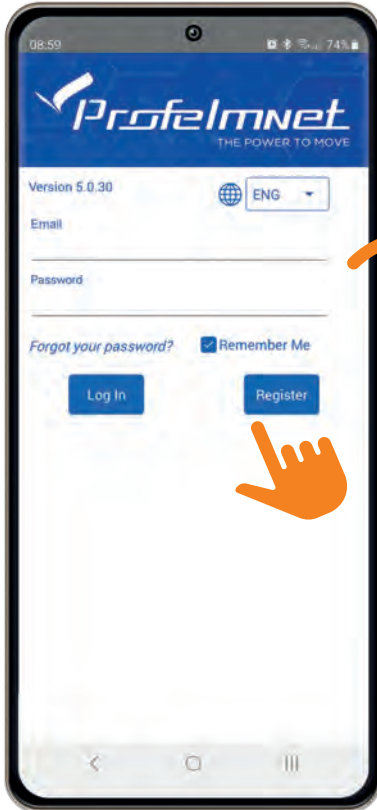


ProfelmNet
Easy Tech

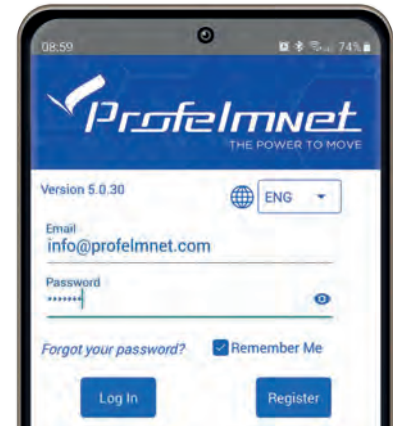


REGISTER

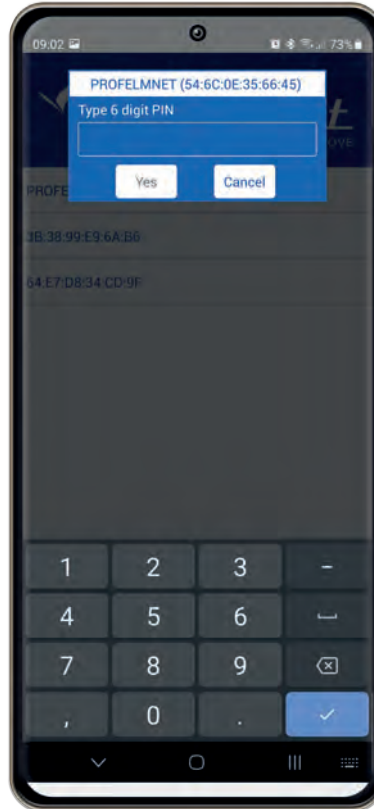
FOLLOW THE STEPS TO REGISTER



- 1 Choose the language
- 2 Press Register & fill in your personal data
- 3 Scan QR code. Find the QR code on the board & scan it
- 4 Press sign up to finish



CONNECTION with the board

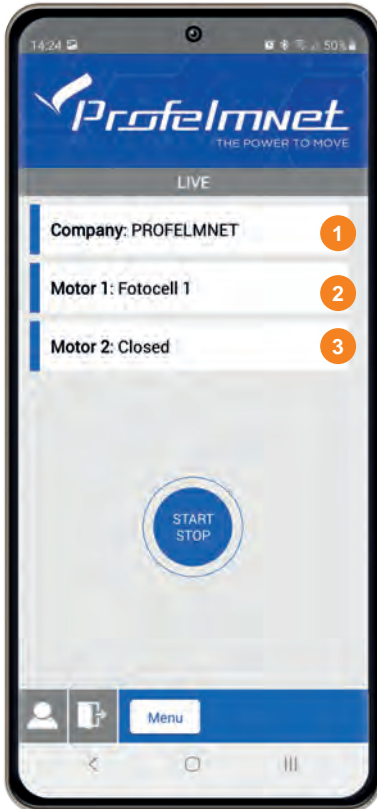


- 1 Press scan to find the PROFELMNET device
- 2 Choose the PROFELMNET device
- 3 Type the 6 Digit PIN

During the first connection, type 000000 PIN and then type your personal 6-digit PIN.

The PIN code is your personal security number. Without this PIN code, you can not access the board. Avoid using simple easy PIN codes (i.e 111111)

LIVE SCREEN

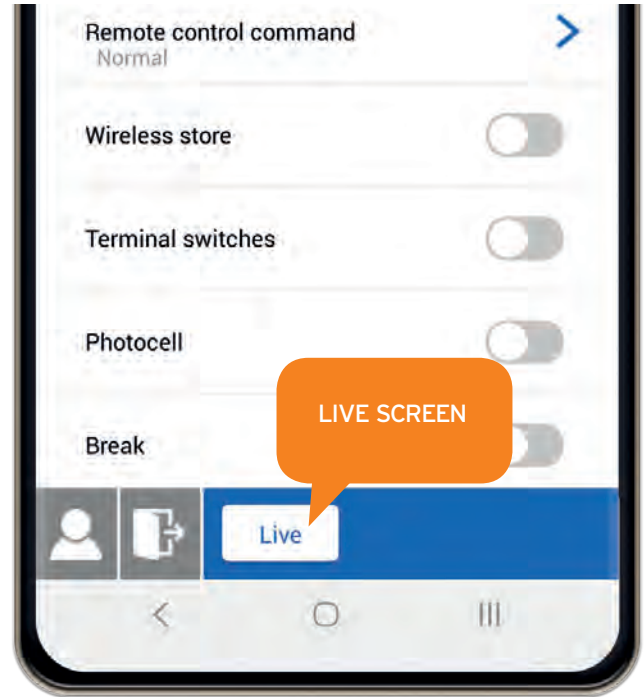
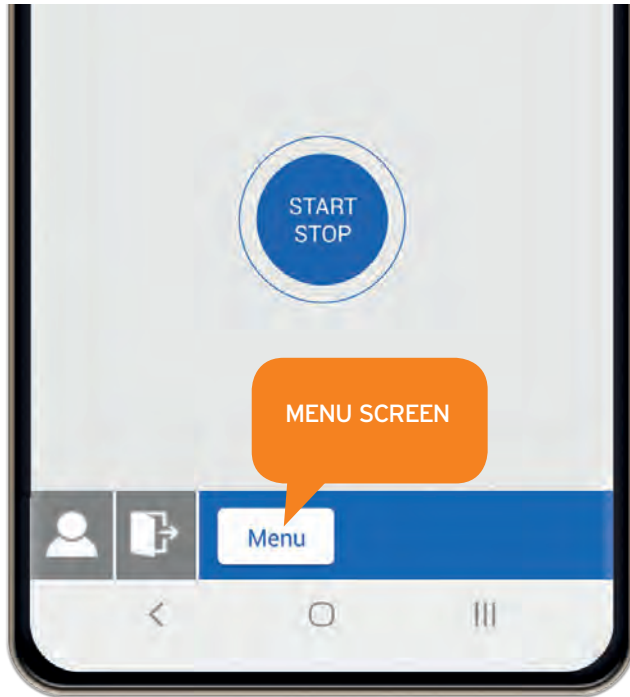


- 1 Company:
Board Supplier
- 2 Motor 1:
Installation Info
- 3 Motor 2:
Installation Info

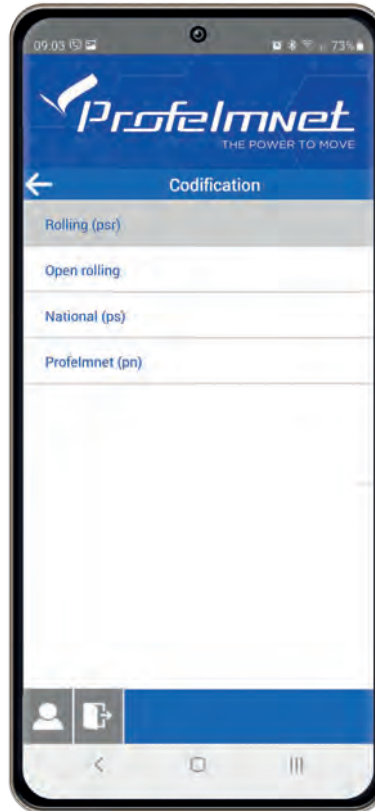
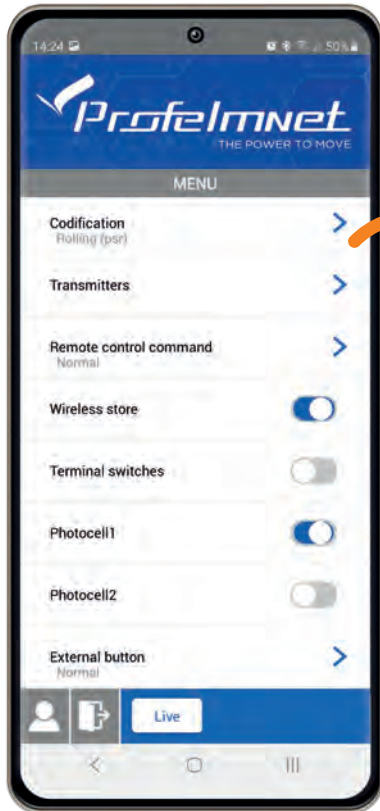


USER PROFILE:
Edit your personal data

SWITCH LIVE SCREEN TO MENU SCREEN

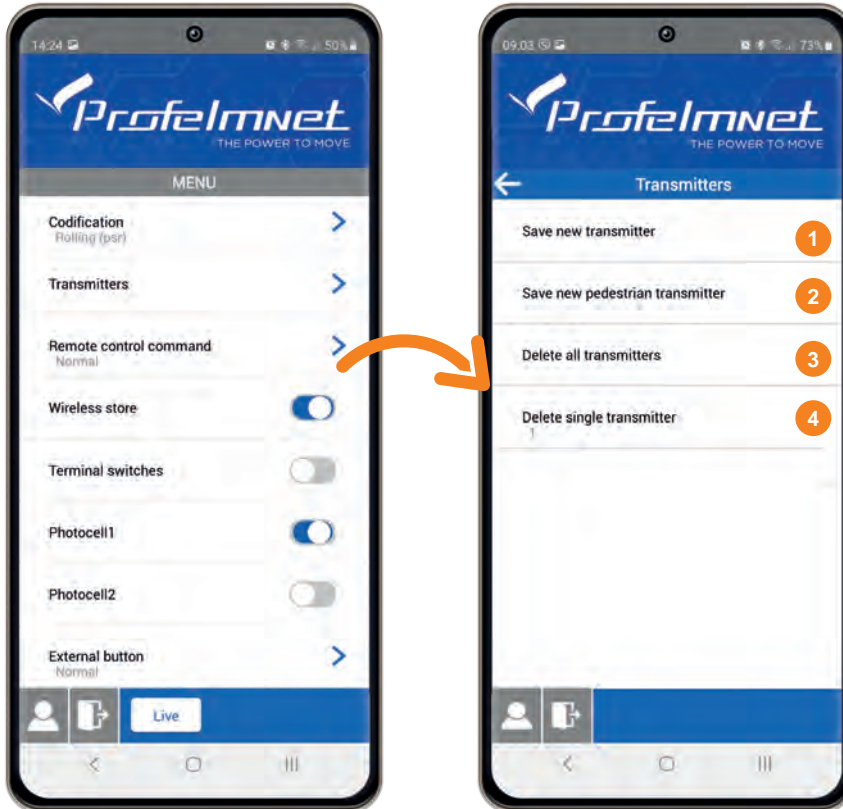


MENU: Codification



Codification: Select based on the installation's transmitters

MENU: Transmitters



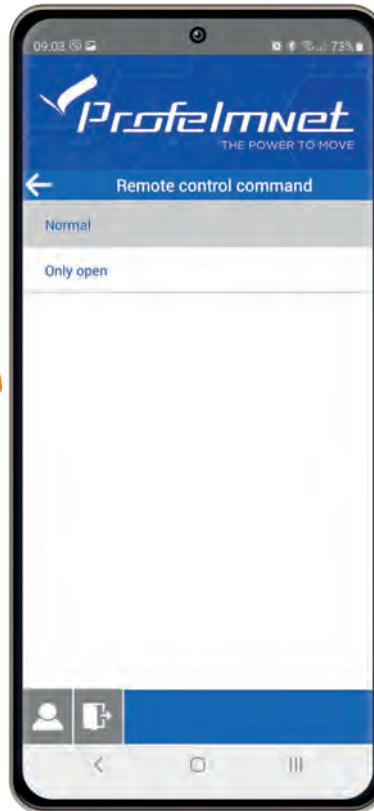
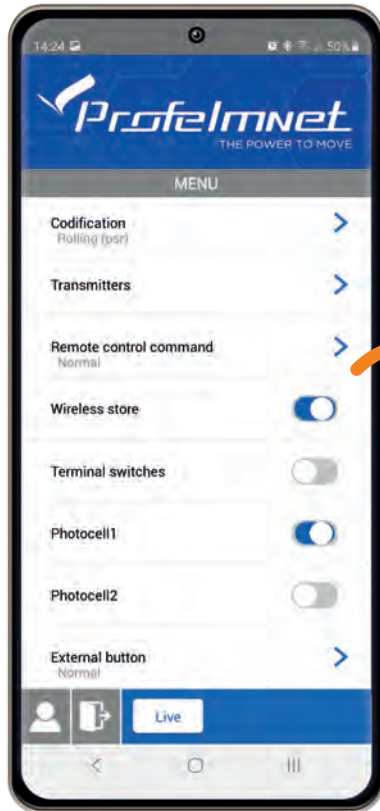
- 1 Save new transmitter:**
Press the transmitter button you want to save
- 2 Save new pedestrian transmitter:**
Press the transmitter button you want to save as pedestrian
- 3 Delete all transmitters:**
YES/NO
- 4 Delete single transmitter:**
Choose the number of transmitter to DELETE.



USER NUMBER:

The number displayed on the main screen of the application, LIVE screen, every time each remote control is activated.

MENU: Remote control Command

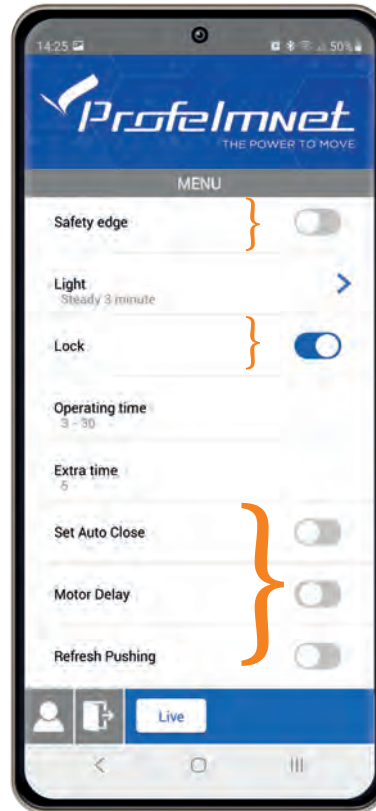
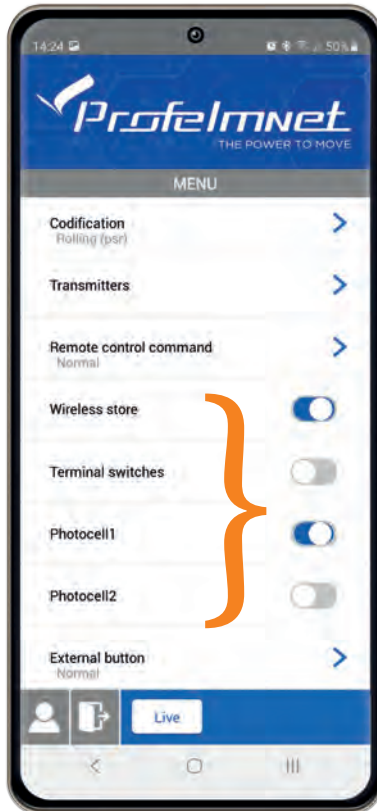


Remote control command

Normal:
START-STOP-CLOSE

Only Open

MENU: Settings ON/OFF



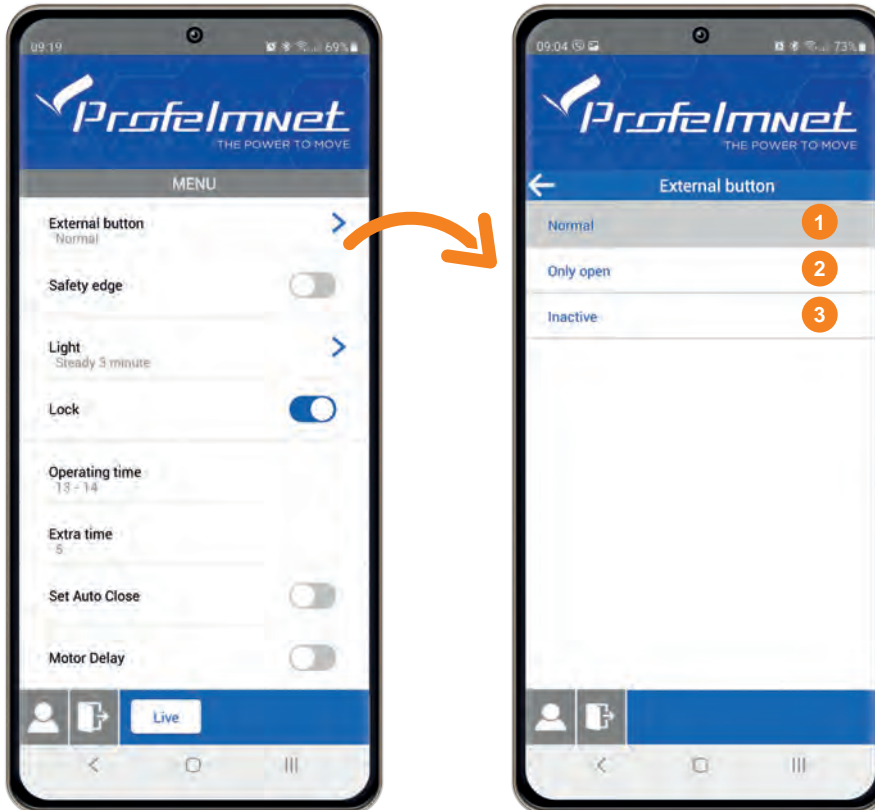
Wireless store
Terminal switches
Photocell 1
Photocell 2
Safety edge
Lock
Motor delay
Recurring closing

OFF ON



ADD NEW TRANSMITTERS WIRELESSLY:
The motor is fully closed or open. Press a working transmitter button (already in memory) to start the motor working and hold it pressed until the motor stops. When it stops, leave it and press the new transmitter button immediately. The new transmitter is saved. Repeat steps to program more transmitters remotely. When the memory is full (300 transmitters) you cannot add more new transmitters.

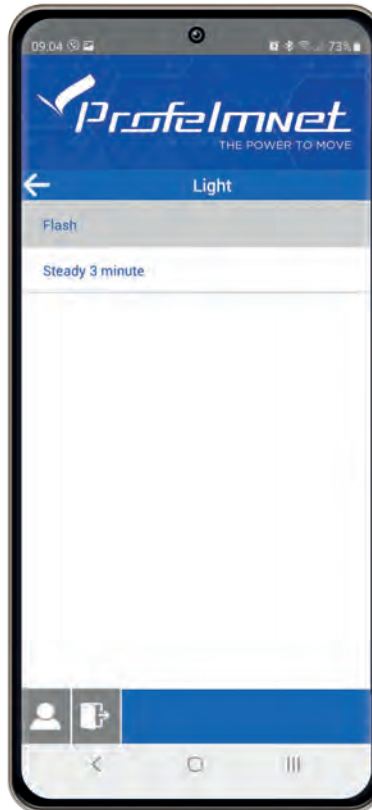
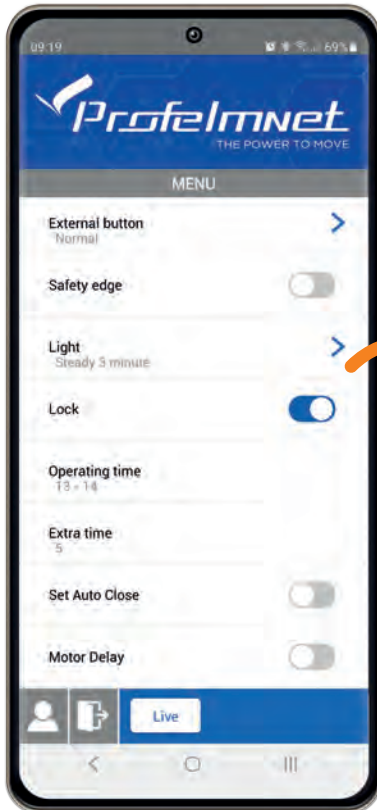
MENU: External Button



External Button: Select based on the installation

- 1 NORMAL
- 2 ONLY OPEN
- 3 INACTIVE

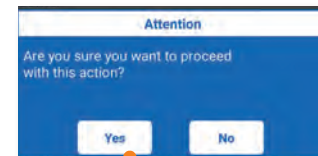
MENU: Flash



FLASH: The light is flashing during the cycle of the motor.

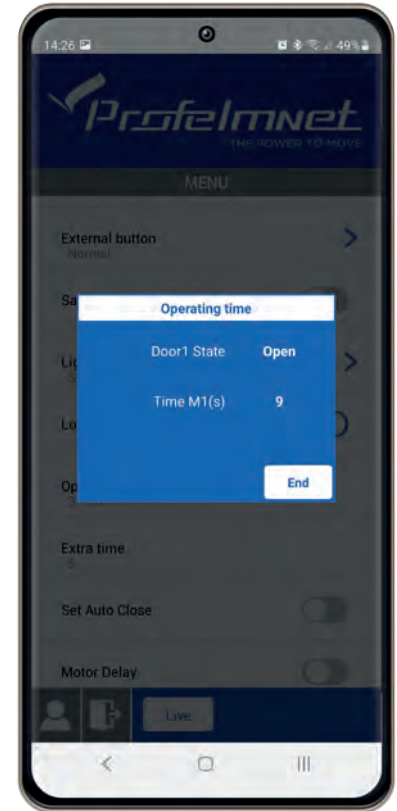
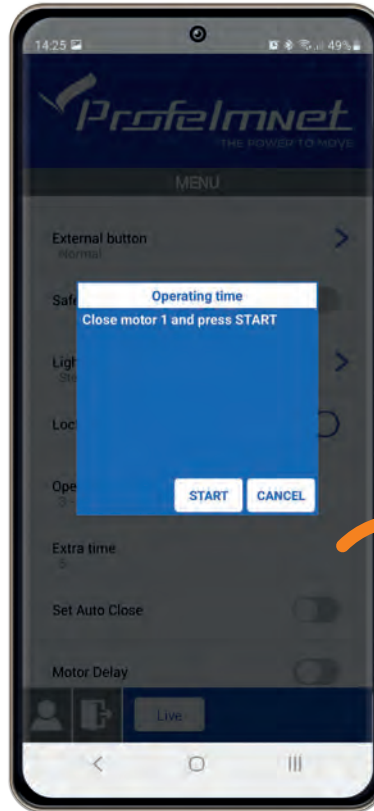
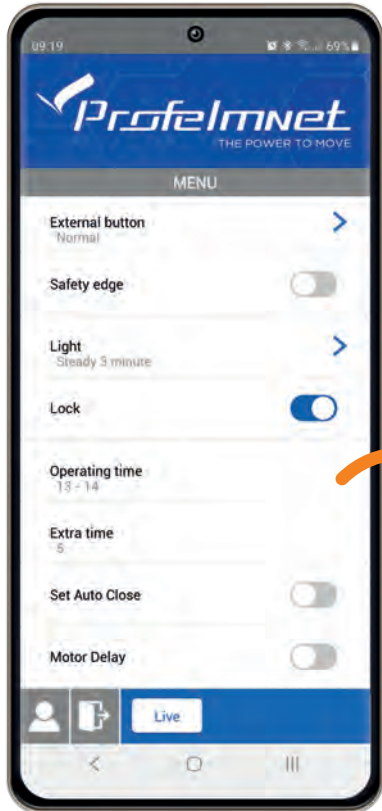
LIGHT STEADY 3 MINUTES: The light is steady for 3 minutes after the last command.

SELECTION CONFIRMATION

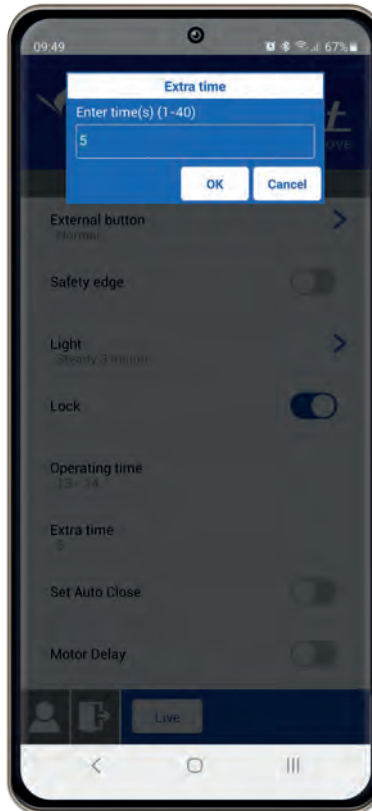
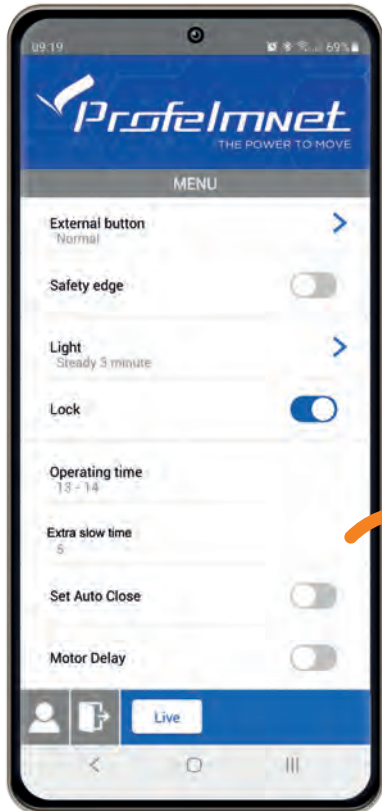


MENU: Operating time - motor 1 & motor 2

Follow the application steps

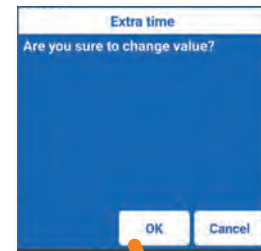


MENU: Deceleration time

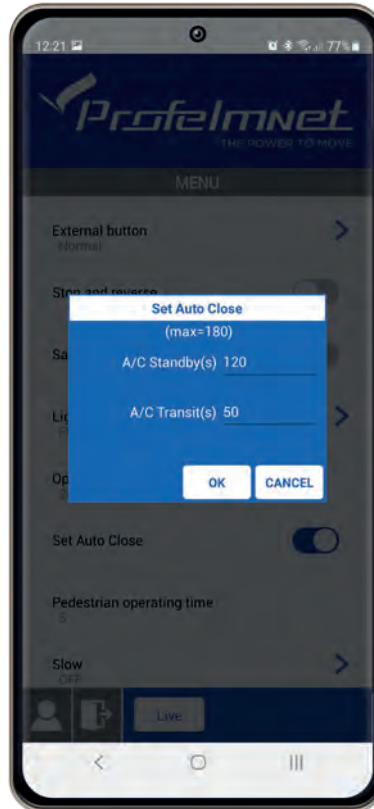
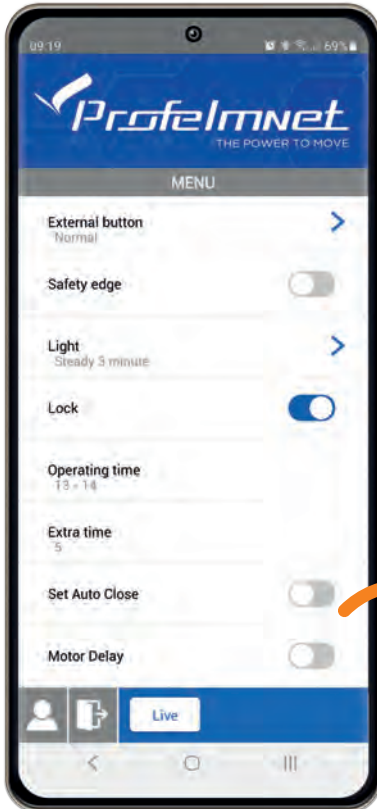


Deceleration time:
Select based on the installation

SELECTION CONFIRMATION



MENU: Set auto - close



- **Auto-Close Stand-by:**
The time when the gate is open and the photocell is not activated
- **Auto close Transit:**
The time when gate is open after the photocell is activated



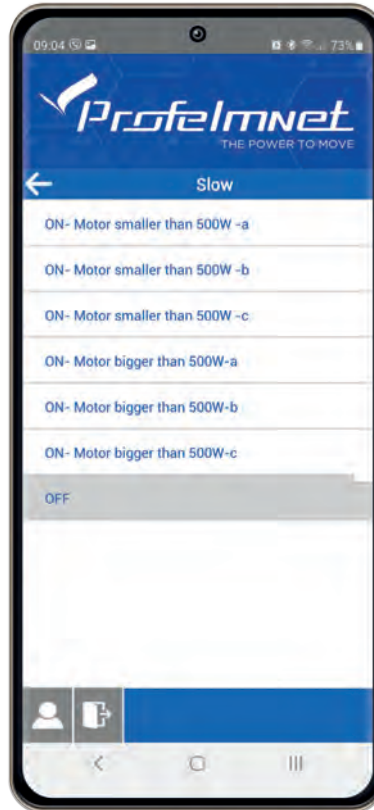
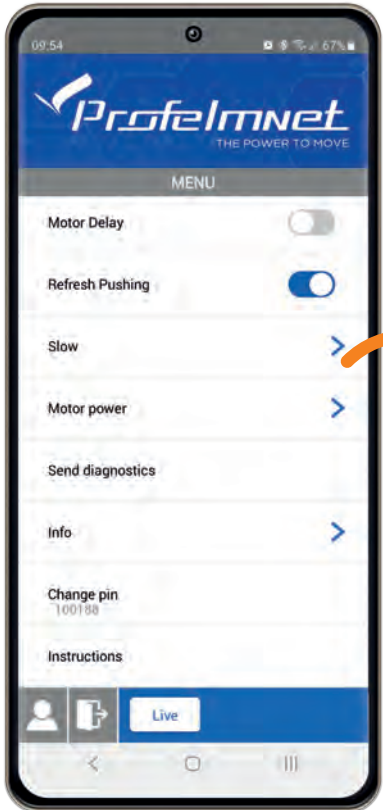
SET TIME:

Set time on each field in seconds

If you want to edit the time, you need to disable the AUTO-CLOSE and re enable it

OFF ON

MENU: Deceleration



DECELERATION

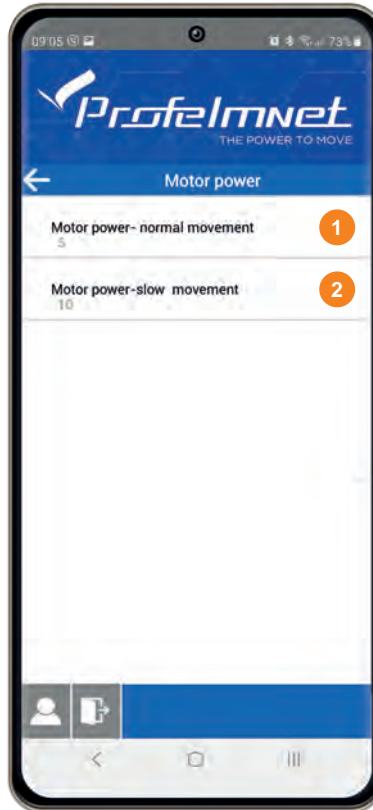
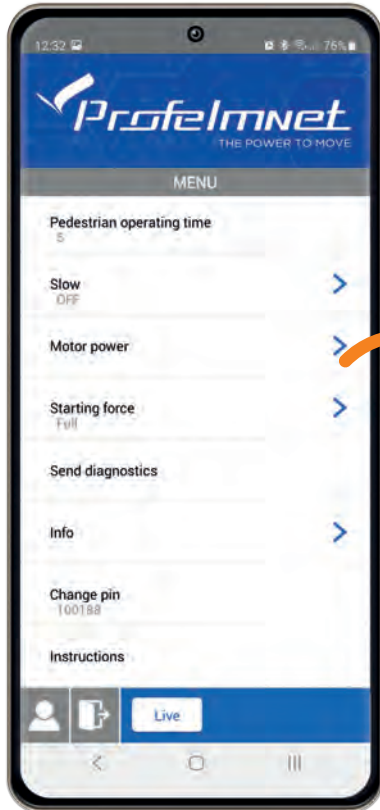
Select based on the installation



Recommended Factory Settings:

- 1. Motor less than 500 watt:
Choice A*
- 2. Motor more than 500 watt:
Choice A*

MENU: Motor Power

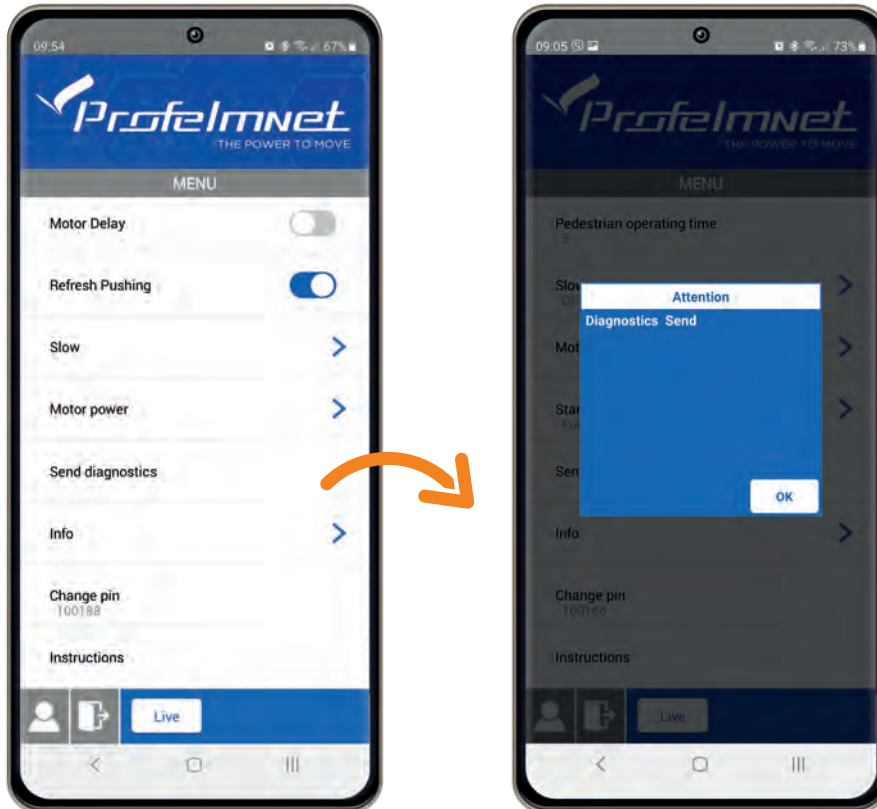


- 1 Motor power - normal movement:
Enter value
- 2 Motor power - slow movement:
Enter value

ENTER VALUE:

The image shows a modal dialog box with a blue header 'Motor power- normal movement'. Below the header is the text 'Enter value (1-10)' and a text input field containing the number '5'. At the bottom of the dialog are two buttons: 'OK' and 'Cancel'. A hand icon is pointing at the 'OK' button.

MENU: Send Diagnostics



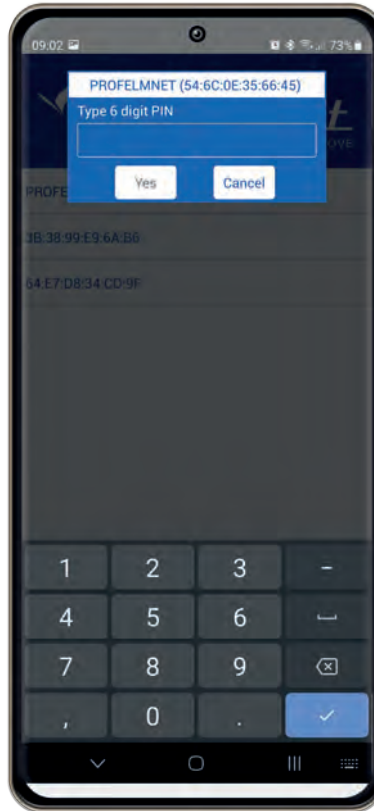
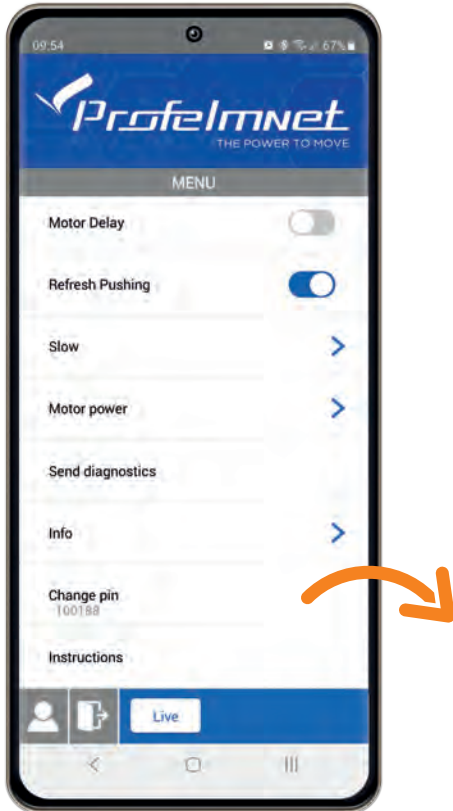
In case of technical support, send diagnostics to the Profelment technician

MENU: Info



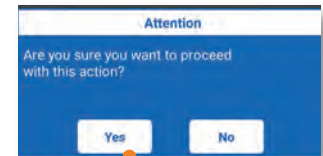
All information of the board

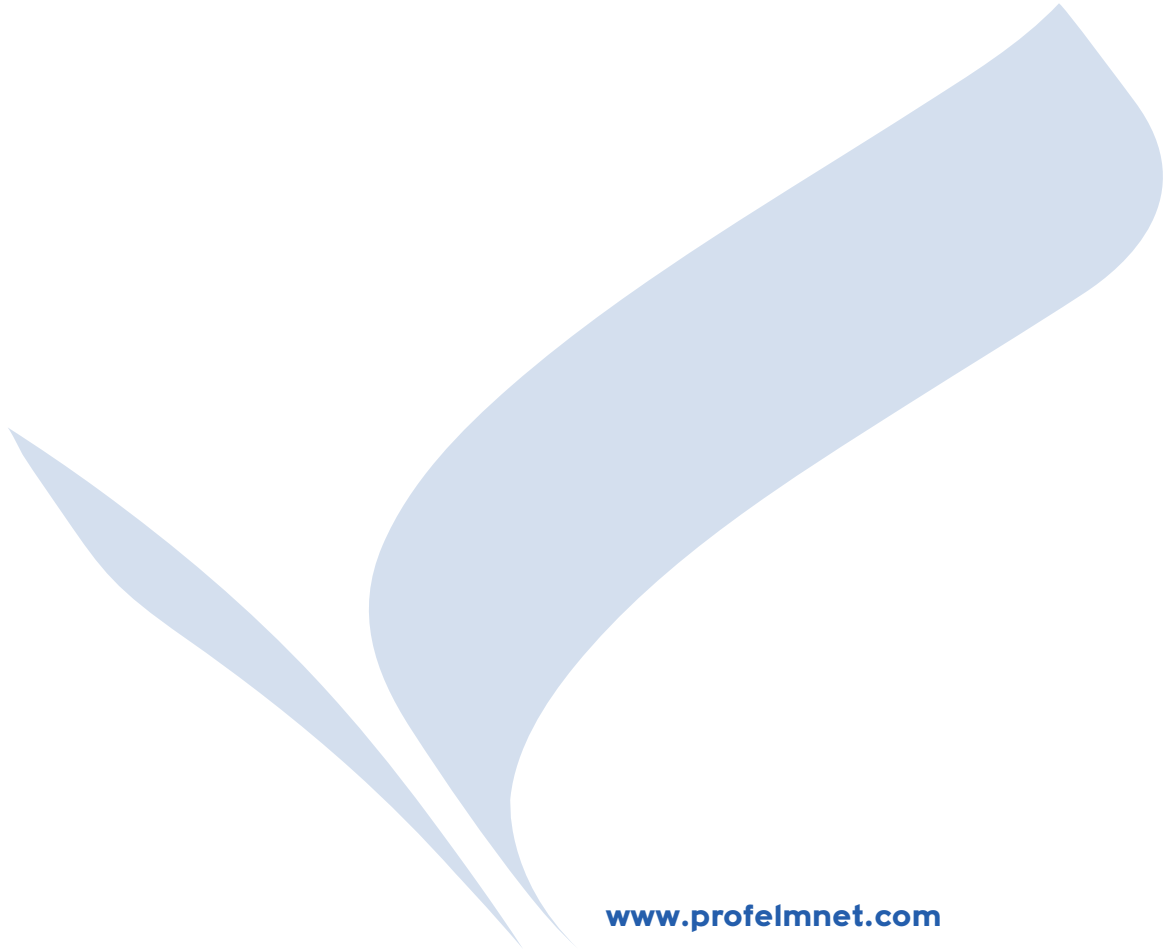
MENU: Change PIN



CHANGE PIN

SELECTION CONFIRMATION





www.profelmnet.com